

DISPENSING HEADS FS 2005 AND FS 182

Manufacturers of Paints, Additives and Printing Inks Medium and Large Flexible Packaging Companies

Description

The FS 2005 and FS 182 application range is very diverse and depends on the numbers, the mass flow and the physical properties of the components that need to be dispensed. Typical applications would be for manufacturers of paints, additives and printing inks, medium and large packaging companies etc. They are suitable for water-, solvent- and UV-based products and cover high output per year but also the need to dispense into small cans. In order to account for different repeatability requirements and dispensing container sizes they can be equipped with several scales or our volumetric dispenser HX5.

- ▶ For in can tinting and medium to large scale production batches
- ▶ FS 2005 for a number of components ≤ 32
- ▶ FS 182 for a number of components > 32
- ▶ Different valve diameters from 20 mm to 65 mm
- ▶ Movement of valve platform via servo drive
- ▶ Actuation of dispensing valve via servo drive
- ▶ For ex and non-ex environment
- ▶ In combination with up to 4 scales, mass flow meters or/and our volumetric system HX5

Storage Farm

The FS 2005 and FS 182 can be combined with different kinds of containers from several m³-tanks to small movable pails. The size of the different containers depends on several criterias such as the consumption of the product, its distance to the dispensing head, the size of the manufacturing containers etc.

FÜLL-Dispensing Valves

- ▶ Available in different outlet diameters (from 8 mm to 65 mm)
- ▶ Flow rate of 5,97 m³/h*) for 65 mm-valve
- ▶ With needle for droplet dispensing
- ▶ Valve head flush with the valve platform to allow for complete removal of residues with valve head cleaning unit
- ▶ Movement of the valve platform and actuation of the valves via servo drive
- ▶ Made of stainless steel
- ▶ Re-circulation connection is standard

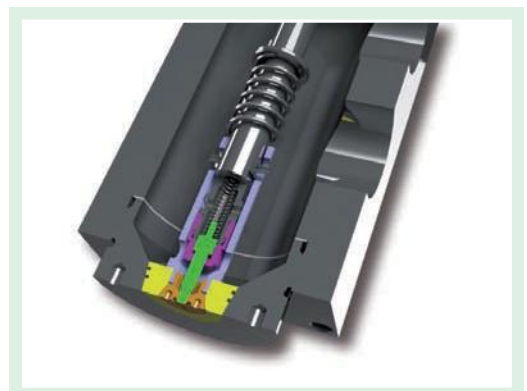
*) for water and a velocity of 0,5 m/s



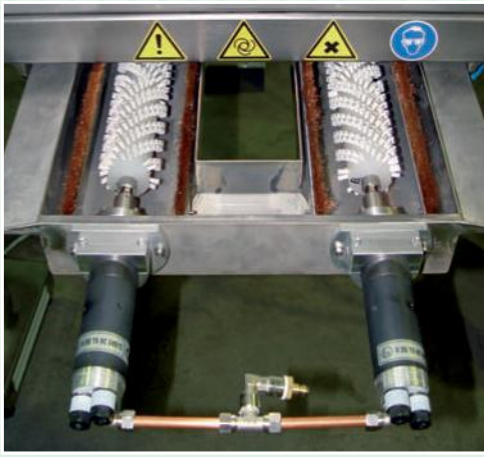
FS 182: ex-proof design with two scales



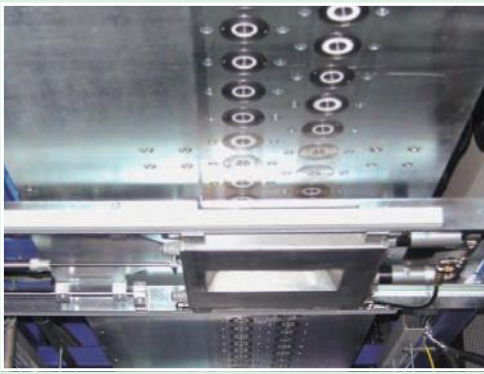
Storage Farm: from small pails to large tanks



FÜLL-Dispensing Valve



Valve Head Cleaning Unit: top view – easy access



Valve Head Cleaning Unit: bottom view – cleaning position

Valve Head Cleaning Unit

FÜLL's Valve Head Cleaning Unit combines mechanical cleaning (rotating brushes) and chemical cleaning (suitable cleaning liquid). It properly removes residues of components sticking to the valve head after dispensing and avoids emission of solvent.

Assemblies:

- ▶ Pan with rotating brushes and pneumatic drives
- ▶ Double diaphragm pump
- ▶ Hoses and fittings

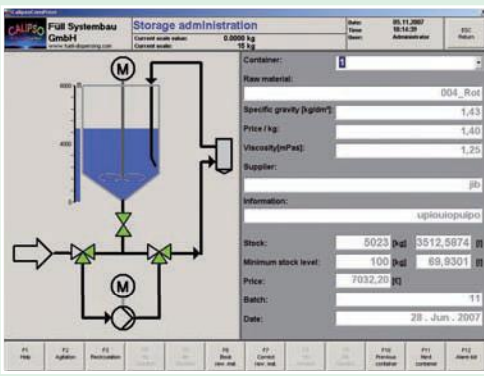
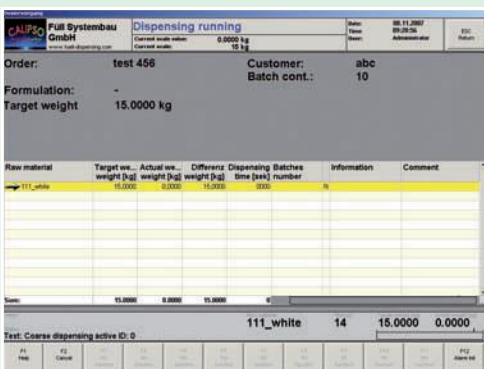
Software CALIPSO^{PRO}

The software CALIPSO^{PRO} (Colour and Liquid Processing Software) is written and supported in-house. This allows a quick and reliable service and customized programming whenever needed. Some of its functions:

- ▶ Order administration
- ▶ Administration of formulations
- ▶ Administration of liquid raw materials
- ▶ Inventory control
- ▶ Agitation and recirculation of products
- ▶ Password system (access rights)
- ▶ History file
- ▶ Printing functions
- ▶ Error messages
- ▶ And many more...

Options

- ▶ Manual Control Backup
Emergency tool which will allow the operator to dispense single components via PLC in case the dispensing-PC breaks down
- ▶ Connection to Colour Matching Software
Formulations created/modified on the Colour Matching Software will be communicated to the dispensing system
- ▶ Connection to ERP-Software
To communicate relevant dispensing information such as orders, formulations, target weights etc. and to communicate back actual values, inventory levels etc.
- ▶ Agitators
Integrated into the dispensing head to agitate during dispensing and as stand alone solution to homogenize formulations after dispensing
- ▶ And many more...



Software CALIPSO^{PRO}