

DISPENSING HEAD

FS 188

Converters · Lamination Applications · Adhesive Manufacturers

Description

The FS 188 is our special construction series for batch or continuous supply of formulations. It is used where reactive and other components have to be dispensed (and possibly simultaneously agitated) and then supplied to a subsequent process, e. g. lamination machines, dip tanks, curtain coaters etc. In order to account for repeatability and traceability mass is the measurand; either by means of scales or mass flow meters.

- ▶ For continuous or batch supply of subsequent processes
- ▶ Highest repeatability and traceability due to gravimetric and mass flow meter dispensing
- ▶ Dispensing of reactive components and catalysts
- ▶ "In-flight"-change of formulations
- ▶ Bubble-free production of formulations
- ▶ Automatic cleaning cycles in case of formulation change

Storage Farm

The FS 188 can be combined with different kinds of containers from several m³-tanks to small pails. Usually, the transport container will be directly connected to the dispensing system. If required, intermediate containers equipped with level sensor will be used in order to ensure uninterrupted supply and sufficient time for the operator to replace the storage container.

FÜLL-Dispensing Valves

- ▶ Available in different outlet diameters (from 8 mm to 65 mm)
- ▶ Flow rate of 5,97 m³/h*) for a 65 mm-valve
- ▶ With needle for droplet dispensing
- ▶ Valves fixed to the valve platform and pneumatically activated
- ▶ Valve head flush with the valve platform to allow for complete removal of residues with valve head cleaning unit or through manual dispensing.
- ▶ Made of stainless steel
- ▶ Re-circulation connection is standard

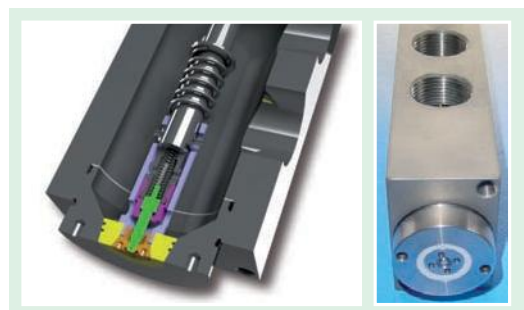
*) for water and a velocity of 0,5 m/s



FS 188: semi-continuous supply of reactive silicone components to a dip tank system for the production of silicon implants.



Storage Farm: combination of transport and intermediate container



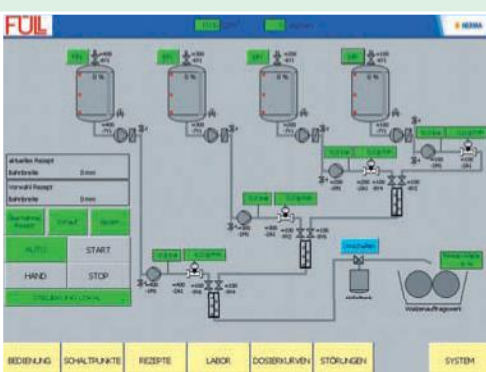
FÜLL-Dispensing Valve



Dynamic Mixer: for process with batch supply



Static Mixer: 2 component valve block with static mixer for process with continuous supply



Dispensing Software: written and supported in-house

Agitation during Dispensing

By integrating agitators, static mixers or dynamic mixers respectively the different components can be homogenized during dispensing. Necessary chemical reactions can thus be supported and different flow characteristics and specific gravities can be compensated. Depending on the requirements and the nature of the components cleaning will be done manually or through automatic cleaning cycles

Dispensing Software

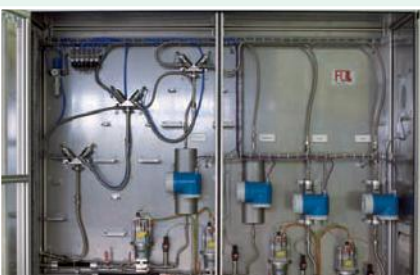
FÜLL's dispensing software for the FS 188 is written and supported in-house. This assures quick and reliable service and customized programming whenever required.

- ▶ Administration of orders, recipes and components
- ▶ Administration of dispensing parameters
- ▶ Administration of batch containers
- ▶ Agitation and Circulation Cycles
- ▶ Password System
- ▶ Inventory Control
- ▶ History File
- ▶ Error Messages
- ▶ Connection to ERP-Software
- ▶ Etc.

Options

- ▶ Connection to ERP-Software
To communicate relevant dispensing information such as orders, recipes, target weights, actual values, inventory levels etc.
- ▶ Barcode Scanner
Skips manual input and thus avoids operator mistakes
- ▶ Label Printer
- ▶ Agitator
Integrated into the dispensing head to agitate during dispensing but also as stand alone solution to homogenize recipes after dispensing
- ▶ Inline-Viscosity Measurement
- ▶ Etc.

Project Examples



Continuous supply of reactive silicone components via mass flow meters and cascade-style mixing for the production of liners for labels.



Batch supply of lamination components with integrated agitator for the supply of a lamination machine.



Continuous supply of lamination components via mass flow meter to a curtain coater for the production of packaging material for the food industry.